
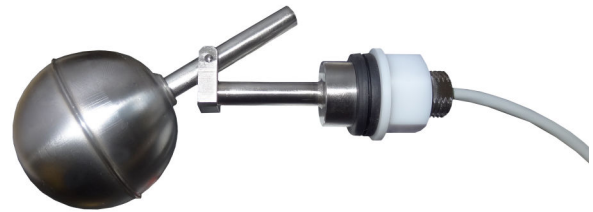


GENERAL CHARACTERISTICS

This level switch, with its reduced overall dimensions and simplicity of installation, offers a reliable solution for the control of liquids in all applications where it is necessary to mount a lateral type.

The standard version is for installation from inside the tank, on request, execution with possibility of mounting from outside the tank are available.

- Reed contact.
- Maximum working pressure 30 Bar.
- Maximum working temperature 110 °C
- Degree of protection IP65
- ATEX Exia  construction.



TECHNICAL DATA Tab.1

DN	Process connection		Float S.G.	Max. pressure Bar	Max. temperature °C	Hysteresis mm	Weight g
	Assembly from inside	Assembly from outside					
16	M16 x 1,5	On request	0,67	30	110	8	190
					Class	L	

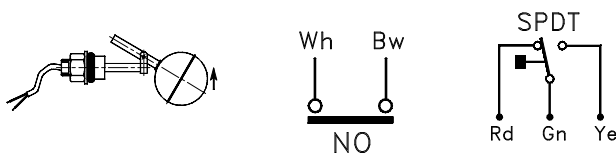
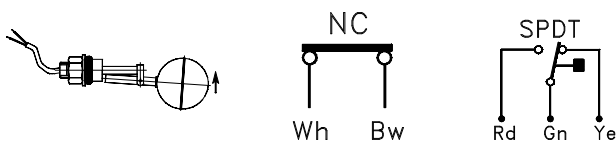
Male thread	Body material	Float material	Lever mechanism material
K	M16 x 1,5	S52	--
		AISI-316	AISI-316

ELECTRICAL CONTACT Tab.2

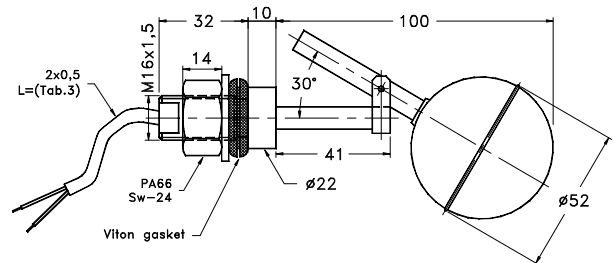
Type		Power		Voltage		Current	
		VA	W	AC	DC	AC	DC
3	SPST	70	50	300	350	0,5	0,7
7D	SPDT	20	20	150	150	0,5	0,5

WIRING Tab.3

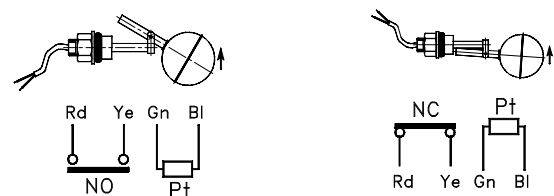
		Code
Cable	1,5 m.	C1
	3,0 m.	C2
Protection	-	IP65



DIMENSIONS mm.



PT100 PT1000 OPTIONS Tab.4



NOMENCLATURE

L1	S52	SML	3	16	KS	C1L	PT100	
•								- Lateral installation – 1 contact
	•							Tab.1 Float
		•						- Type
			•					Tab.2 Electrical contact
				•				Tab.1 Process connection dimension
					•			Tab.1 Thread, process connection and body material
						•		Tab.1-3 Electrical output – temperature class
							•	Tab.4 Pt 100 - Pt 1000 sensor option